



- Up to 95.0% AFUE*
- Stainless steel water tube heat exchanger
- Five sizes - 80, 100, 120, 150, and 180 MBH input
- Compact wall mount installation
- Outdoor reset with included sensor
- Modulating burner with 10:1 turndown ratio
- Honeywell SOLA control with touch screen user interface
- Vent adapter allows for CPVC/PVC or single wall polypropylene venting
- Preinstalled boiler pump
- Low NOx - meets South Coast Rule 1146.2 requirements

*Check individual model for exact AFUE rating.

PHANTOM[®]

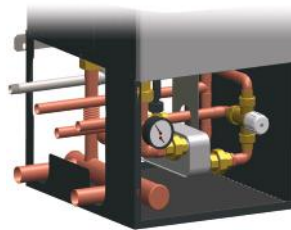
**Stainless steel, condensing,
gas-fired hot water boiler**

“EZ” ACCESSORIES FOR THE PHANTOM[®]



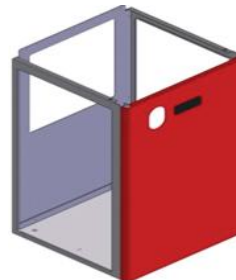
“EZ Loop” Low Loss Header

The factory-designed “EZ Loop” Low Loss Header is a piping solution that helps contractors to complete the job with speed and accuracy, saving time and money.



“EZ” Combi-Kit

The “EZ” Combi-Kit includes a mixing valve, plate heat exchanger and the EZ Loop Low Loss Header, providing a simple way to add domestic hot water capabilities to the Phantom[®] 150 and 180.



“EZ” Base

The “EZ” Base is the final touch for a clean and attractive installation. It includes adjustable feet and works great with the “EZ Loop” Low Loss Header and the “EZ” Combi-Kit.

Need a larger size?

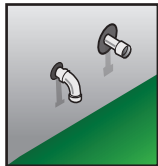
PHANTOM-X

**available in
210 to 500 MBH input.**

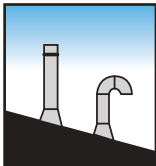
**Quality
Value &
Service**

Typical Venting Configurations (Horizontal and Vertical)

Illustrations are for representation only. For complete venting information, please see installation manual.



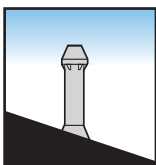
Horizontal 2-pipe



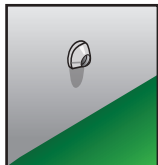
Vertical 2-pipe



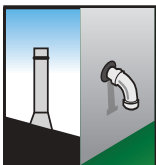
Horizontal 2-pipe low profile



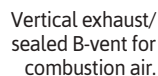
Vertical 2-pipe concentric



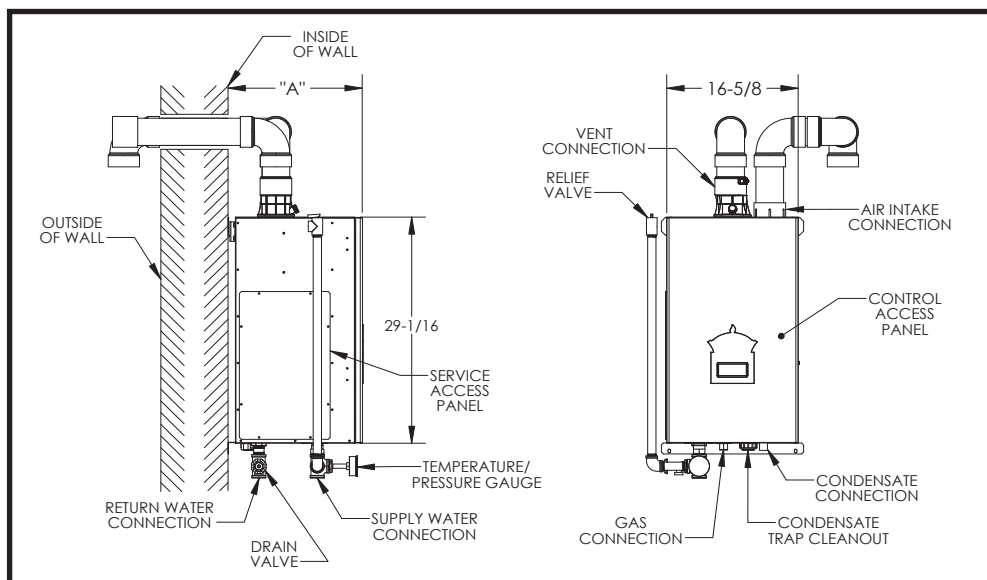
Horizontal 2-pipe concentric



Hybrid



Vertical exhaust/sealed B-vent for combustion air.



Space Heating Ratings



Model Number	Input (MBH) Min-Max	Heating Capacity, MBH	Net AHRI Water, MBH ²	AFUE, %	"A"	Approx. Shipping Weight (lbs)
PHNTM080B	8-80	74	64	95.0	17"	100
PHNTM100B	10-100	94	82	95.0	17"	102
PHNTM120B	12-120	112	97	95.0	17"	105
PHNTM150B	15-150	142	123	95.0	21"	119
PHNTM180B	18-180	169	147	95.0	21"	119
PHNTM180M	18-180	168	147	94.5	21"	119

NOTES:

- Derate required for some models installed above 2,000 ft., consult factory for details. For Canadian installations above 4,500ft., consult authority having jurisdiction for guidance. PHNTM080B may not be installed using LP gas above 2,000 ft. PHNTM120B may not be installed using LP gas above 7,800 ft. PHNTM180B may not be installed using Natural or LP gas above 2,000 ft. PHNTM180M may be installed using Natural and LP gas from 2,000 to 10,100 ft.
- The Net Water Ratings are based on a piping and pickup allowance of 1.15.
- The manufacturer should be consulted before selecting a boiler for installations having unusual piping and pickup requirements, such as intermittent system operation, extensive piping systems, etc.
- Refer to manual for system vent length derates.

ADDITIONAL FEATURES/BENEFITS

- Selectable domestic hot water priority
- Boiler, system, and domestic hot water pump outputs
- Field convertible to LP Gas with conversion kit
- Fuse protection for pump and transformer
- 5 Year Parts Warranty

OPTIONAL EQUIPMENT

- Zone Panel
- LWCO kit
- All boilers shipped for use with natural gas: LP conversion kit sold separately. (080B-100B P/N:107873-01, 120B-150B P/N:10784-01, 180B P/N:107875-01, 180M P/N:108101-01)
- CPVC/PVC vent kit
- Service parts repair kit



The Mega-Stor II[®] indirect water heater utilizes the energy created by your boiler to produce abundant hot water for your home. Mega-Stor II water heaters come in a variety of sizes from 26 to 119 gallons to meet a variety of residential and commercial needs. A Horizontal model is also available in 40 and 53 gallon sizes, as well as a Solar model in 79 and 119 gallon sizes.

Specifications are subject to change without notice.

